



Confidence in a connected world.



**SYMANTEC IS  
EVERYWHERE.**

**Considering Windows 7?  
Learn Migration Best Practices from the Experts**

September 16, 2009

Distributed by Codework – ALTIMATE UK  
[sales@codework.com](mailto:sales@codework.com)

# Why Symantec for Migration?

Why Symantec for Migration?

# Over a 10 Years of Migration Experience

Migration Experience

# Over 250 Million Deployments and Migrations

Deployments and Migrations

# Migration Challenges/Pain Points

## End-User Concerns

- Where are my favorites?
- Where is my printer?
- I can't see my network drives...
- How come I can't...?
- What about my MP3s?

## CIO / CFO Concerns

- Do we have to migrate now or can we wait?
- How much hardware will we have to replace?
- How much overtime will we need to pay?
- How do we keep our end users productive?

## IT Concerns

- Do I really have to touch every computer?
- How do we handle the computers in a branch office?
- How many weekends will this cost me?

# General Migration Considerations

## Communication

- Identify key decision makers
- Plan how to inform all participants



## Setting Expectations

- Clearly define objectives
- Set achievable goals



## Opportunities

- Standardize the environment
- Harvest and consolidate software licenses



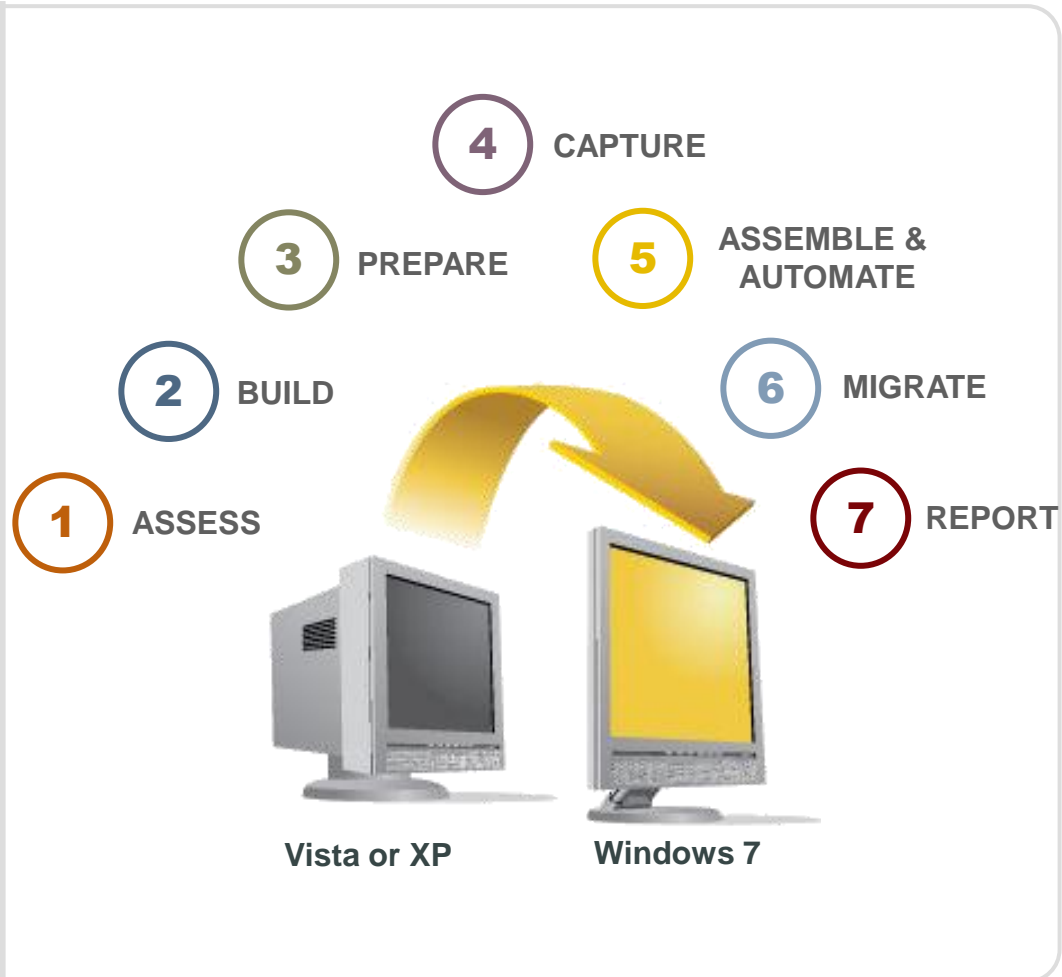
## Staying Focused

- Avoid out-of-scope projects
- Limit costs with a controlled project



# 7 Steps to Windows 7

- 1 Assess Environment
- 2 Build Image
- 3 Prepare Applications
- 4 Capture Personality
- 5 Assemble & Automate
- 6 Migrate Systems
- 7 Measure & Report



# 7 Steps to Windows 7

1

**Assess  
Environment**

2

Build  
Image

3

Prepare  
Applications

4

Capture  
Personality

5

Assemble  
& Automate

6

Migrate  
Systems

7

Measure  
& Report

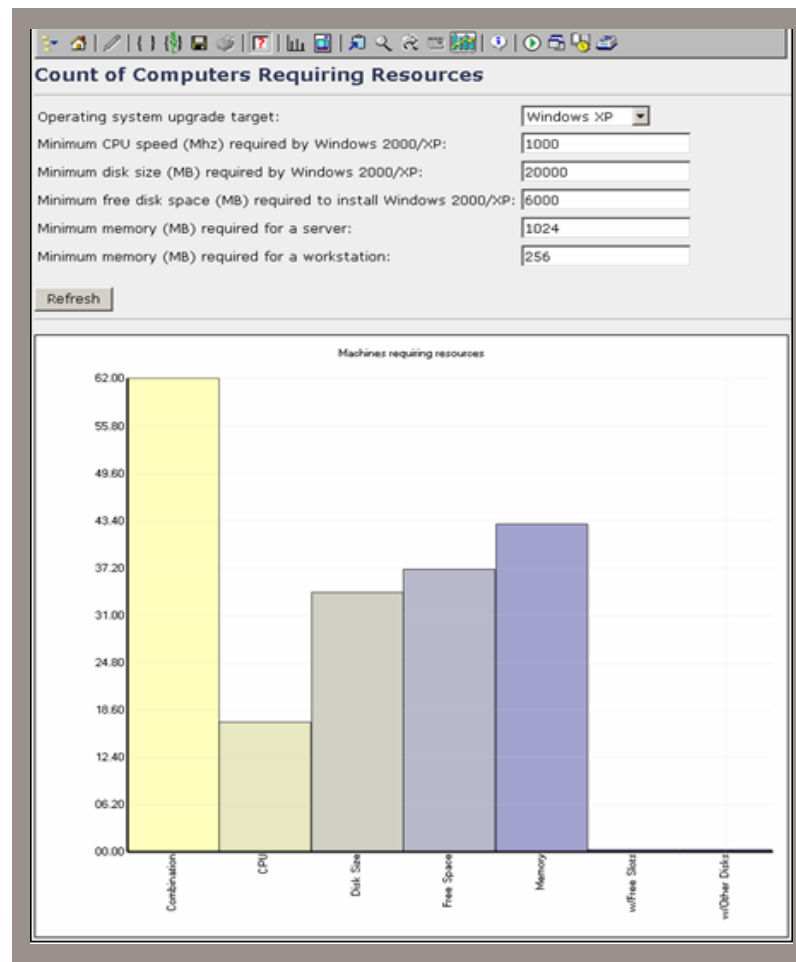
## **ASSESS YOUR ENVIRONMENT AND PLAN YOUR DEPLOYMENT**

- Discover devices and capture inventory
- Determine hardware readiness
- Prioritize applications to test and migrate
- Evaluate costs, SLAs, and identify risks



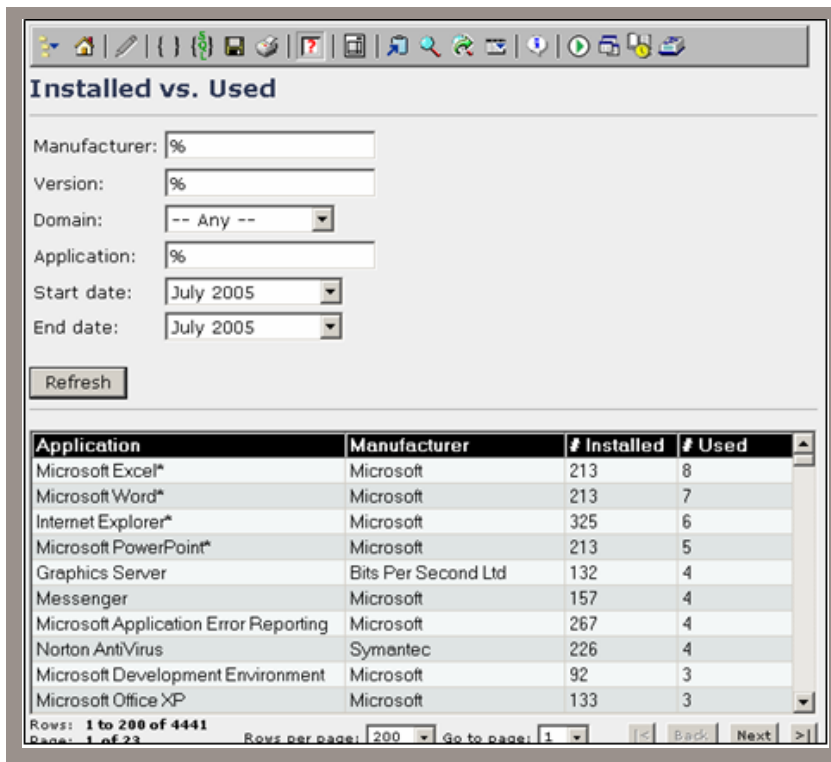
# Hardware Readiness Assessment

- Review HW compliance (RAM, disk space, etc.)
- Can non-compliant components be cost-effectively upgraded (add RAM, add a hard drive, etc.)?
- How many PCs will be replaced? Where are they located?
- Required network infrastructure changes (routers, upgraded bandwidth, etc.)?



# Software Readiness Assessment

- What OS is currently installed?
- What software packages are the end users running?
- What kind of data resides on the user's systems?
- Which data is critical to the business?



The screenshot shows a web-based interface for a software assessment tool. The title is "Installed vs. Used". Below the title are several search filters: Manufacturer (text input), Version (text input), Domain (dropdown menu), Application (text input), Start date (dropdown menu), and End date (dropdown menu). A "Refresh" button is located below the filters. Below the filters is a table with the following data:

Application	Manufacturer	# Installed	# Used
Microsoft Excel*	Microsoft	213	8
Microsoft Word*	Microsoft	213	7
Internet Explorer*	Microsoft	325	6
Microsoft PowerPoint*	Microsoft	213	5
Graphics Server	Bits Per Second Ltd	132	4
Messenger	Microsoft	157	4
Microsoft Application Error Reporting	Microsoft	267	4
Norton AntiVirus	Symantec	226	4
Microsoft Development Environment	Microsoft	92	3
Microsoft Office XP	Microsoft	133	3

At the bottom of the table, there is a pagination control showing "Rows: 1 to 200 of 4441" and "Page: 1 of 23". There are also buttons for "Back" and "Next" and a "Go to page:" dropdown menu.

# 7 Steps to Windows 7

1 Assess Environment

2 Build Image

3 Prepare Applications

4 Capture Personality

5 Assemble & Automate

6 Migrate Systems

7 Measure & Report

## BUILD STANDARD WINDOWS 7 IMAGES

- Create standard images
- Provide devices drivers
- Include applications required for ALL computers in base image\*\*\*



# Best Practices for Hardware Independent Images



Always start with a clean machine

Always use a Scripted OS Install to build source machine

Consider what applications should be included in the image

Did you plan the management agents, security agents, backup agents?

# 7 Steps to Windows 7

1

Assess  
Environment

2

Build Image

3

Prepare  
Applications

4

Capture  
Personality

5

Assemble  
& Automate

6

Migrate  
Systems

7

Measure  
& Report

## Prepare and Verify Applications to ensure post migration success

- Identify support status for Windows 7
- Test application combinations
- Identify any compatibility challenges, repackaging or virtualization needs, and custom install requirements



# 7 Steps to Windows 7

1

Assess  
Environment

2

Build  
Image

3

Prepare  
Applications

4

Capture  
Personality

5

Assemble  
& Automate

6

Migrate  
Systems

7

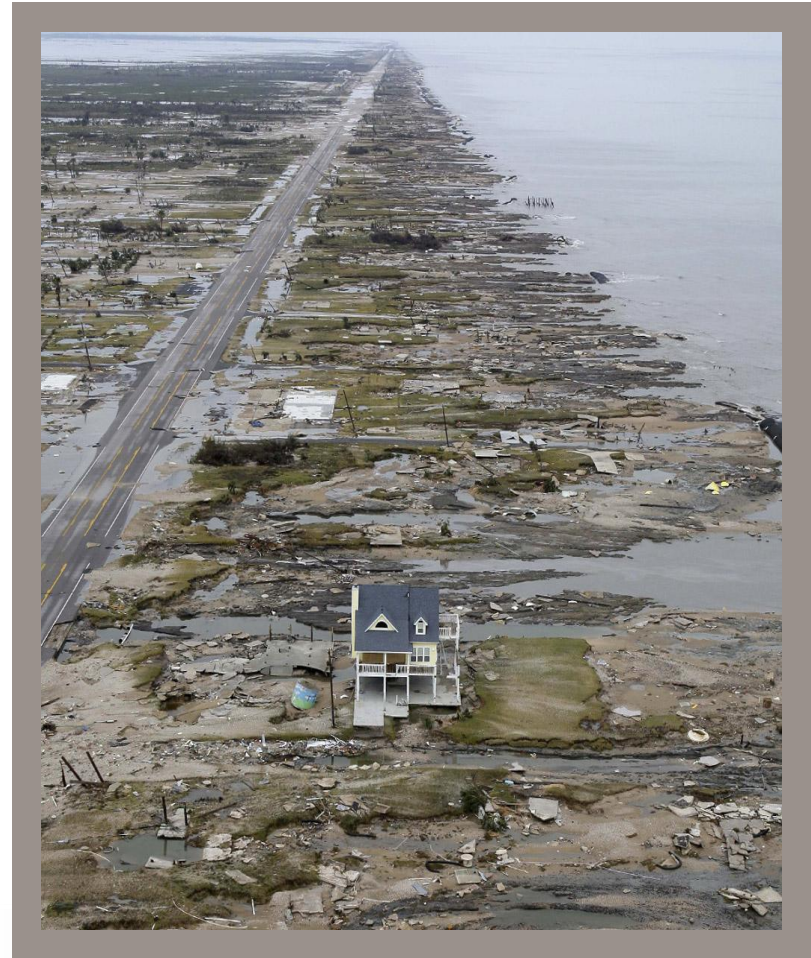
Measure  
& Report

## CAPTURE USER SETTINGS AND PERSONALITY

- Identify global settings to migrate
- Determine applications settings to migrate, including custom applications
- Include data to be moved or require end users to transfer
- Communicating to end users for things that won't get migrated... mp3s, etc.



# In-Place File Preserving Imaging Is Mind Boggling



# 7 Steps to Windows 7

1 Assess Environment

2 Build Image

3 Prepare Applications

4 Capture Personality

5 **Assemble & Automate**

6 Migrate Systems

7 Measure & Report

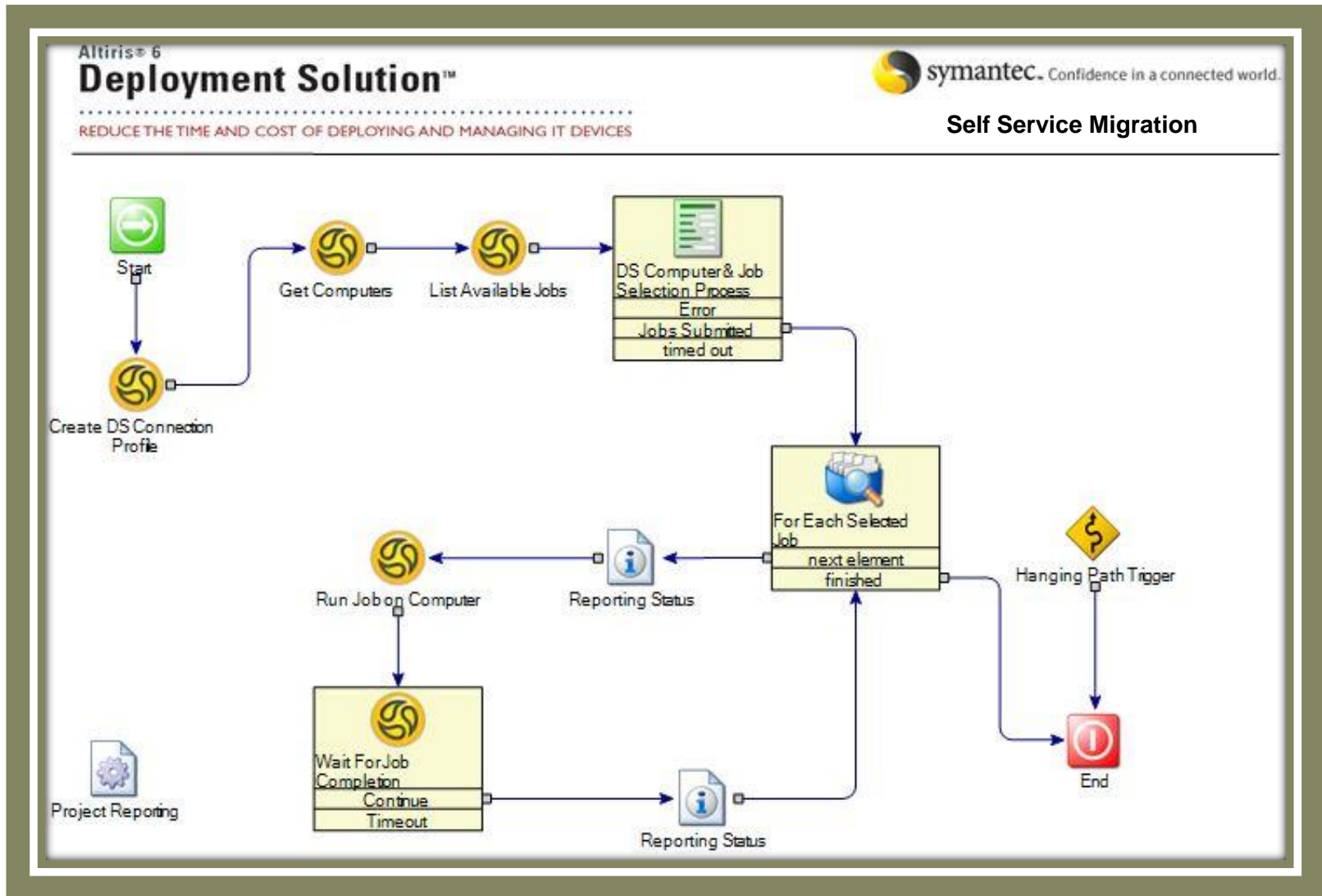
## ASSEMBLE & AUTOMATE THE MIGRATION PROCESS

Create single process flow that includes the following steps:

- Capture personality settings (Step 4)
- Deploy the image (Step 2)
- Install prepared applications (Step 3)
- Restore personality settings



# Add Automation to Simplify Migration



# 7 Steps to Windows 7

1

Assess  
Environment

2

Build  
Image

3

Prepare  
Applications

4

Capture  
Personality

5

Assemble  
& Automate

6

Migrate  
Systems

7

Measure  
& Report

## MIGRATE SYSTEMS

- Test with a simple pilot to ensure success
- Provide timing and proper communication
- Migrate based on the best approach for your organization.



# Different Approaches to Migration



## Mass Migration

- Move everyone to common standard
- Highly manageable, but...
- Expensive



## Batch Migration

- Maintain small set of standard configurations
- Combination of HW refresh and re-imaging
- Good cost/manageability compromise for many



## Gradual Migration

- Migrate on hardware refresh schedule
- Lower cost up-front, but...
- Can create a management nightmare

# 7 Steps to Windows 7

1 Assess Environment

2 Build Image

3 Prepare Applications

4 Capture Personality

5 Assemble & Automate

6 Migrate Systems

7 Measure & Report

## MEASURE AND REPORT ON MIGRATION SUCCESS

- Identify the total number of migrated systems
- Report problems encountered during migration
- Provide overall migration status
- License verification



# Why Use Symantec for Migration?

Integration

Automation



symantec.

Proven Technology

Post Migration  
Management

# Top Reasons Customers Choose Symantec Solutions



## Ease of Use

Other solutions have too much scripting, services and moving parts

## Scalability

Easy to implement scalable solution for servers and desktops

## Speed

Creates images in 40% the time and deploys them in 33% the time (from other vendors' solutions)

## Heterogeneity

Broad support for different hardware and OS types including VMware integration

## Cost

Other solutions require additional hardware for PXE, Multicast server, plus services

# Questions?

Questions?



Confidence in a connected world.

# Thank You!

For more information please contact us at  
[sales@codework.com](mailto:sales@codework.com) or call **0161 474 0444**

Copyright © 2009 Symantec Corporation. All rights reserved. Symantec and the Symantec Logo are trademarks or registered trademarks of Symantec Corporation or its affiliates in the U.S. and other countries. Other names may be trademarks of their respective owners.

This document is provided for informational purposes only and is not intended as advertising. All warranties relating to the information in this document, either express or implied, are disclaimed to the maximum extent allowed by law. The information in this document is subject to change without notice.